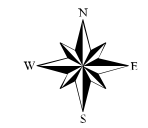
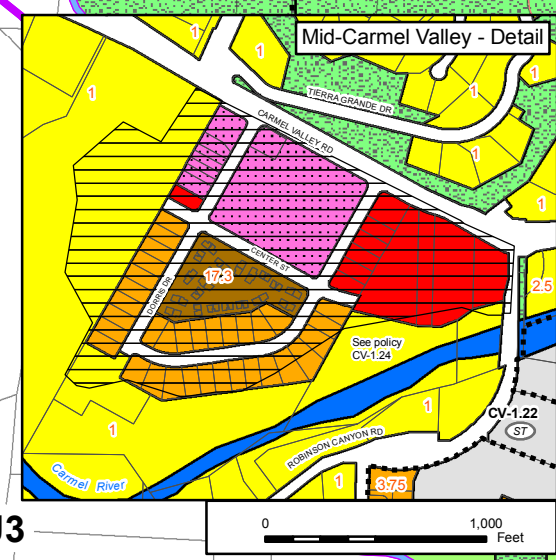
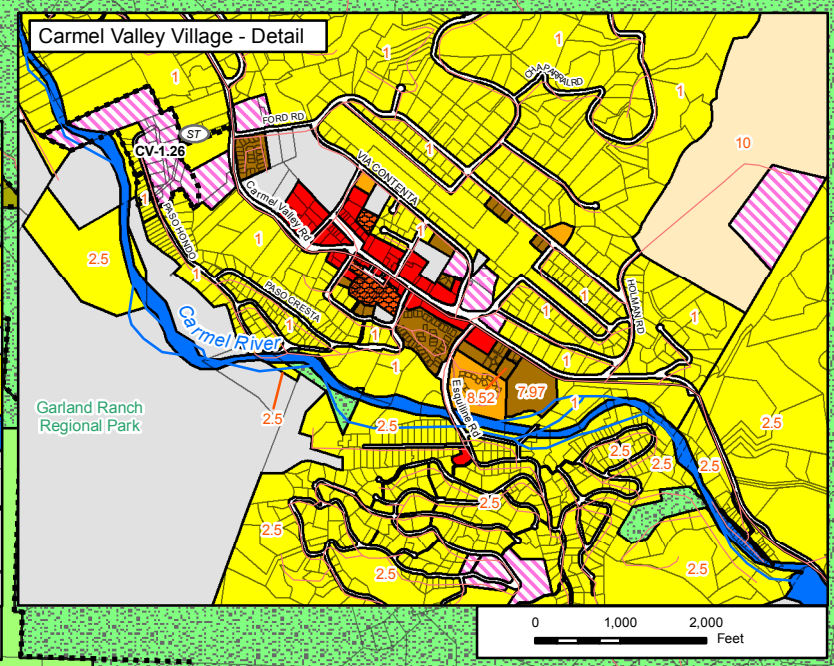
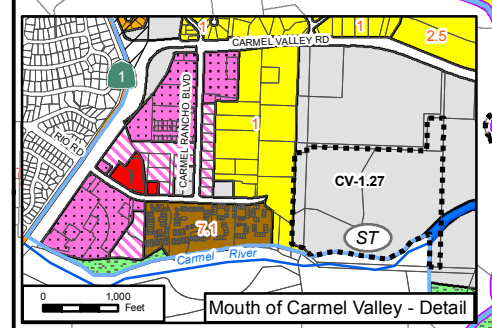
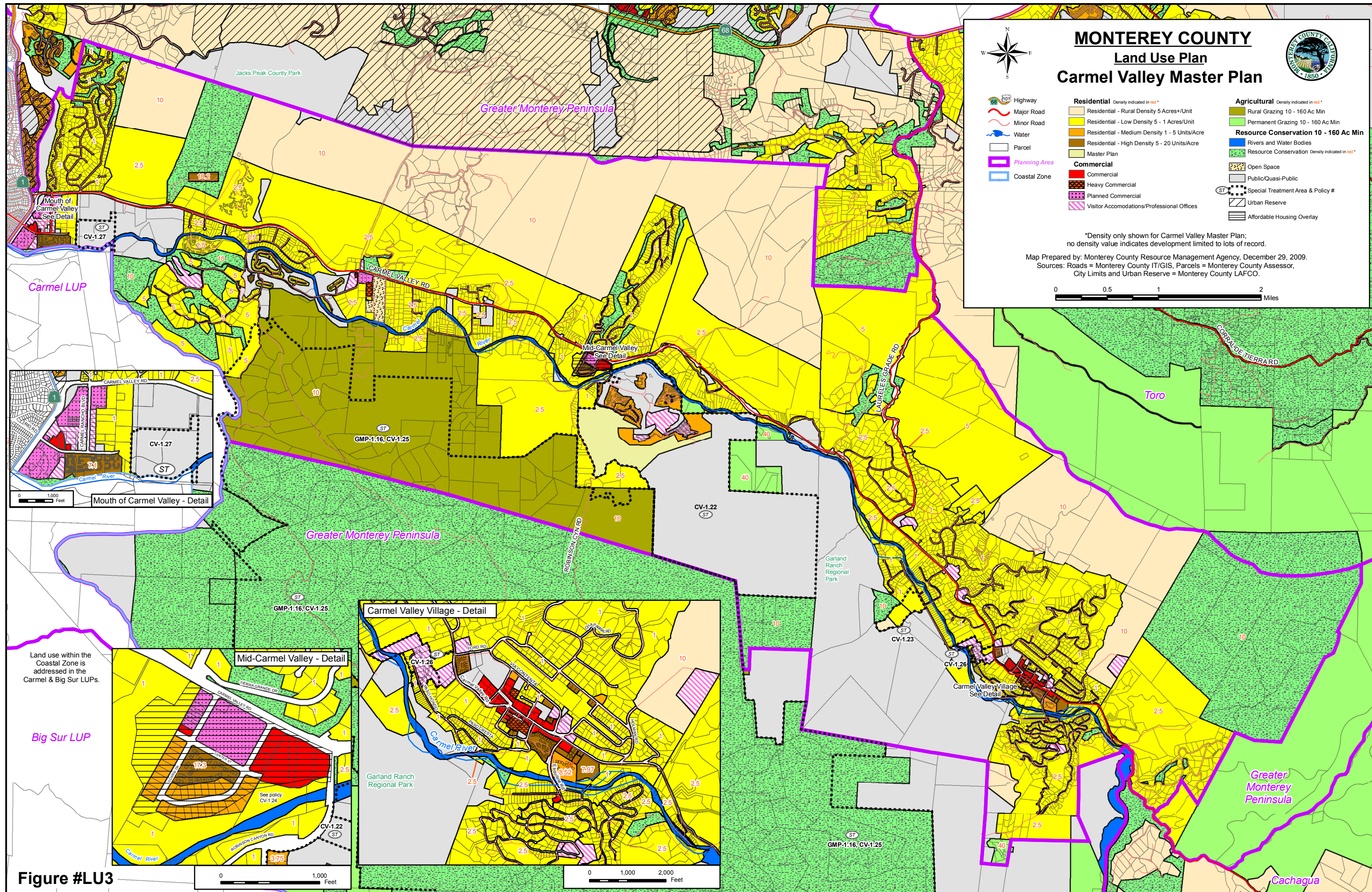
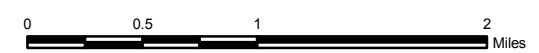


MONTEREY COUNTY Land Use Plan Carmel Valley Master Plan



- Highway
 - Major Road
 - Minor Road
 - Water
 - Parcel
 - Planning Area
 - Coastal Zone
- | | |
|---|---|
| Residential <small>Density indicated in red*</small>
Residential - Rural Density 5 Acres/Unit
Residential - Low Density 5 - 1 Acres/Unit
Residential - Medium Density 1 - 5 Units/Acre
Residential - High Density 5 - 20 Units/Acre
Master Plan | Agricultural <small>Density indicated in red*</small>
Rural Grazing 10 - 160 Ac Min
Permanent Grazing 10 - 160 Ac Min
Resource Conservation 10 - 160 Ac Min
Rivers and Water Bodies
Resource Conservation Density indicated in red*
Open Space
Public/Quasi-Public
Special Treatment Area & Policy #
Urban Reserve
Affordable Housing Overlay |
|---|---|
- Commercial**
 - Commercial
 - Heavy Commercial
 - Planned Commercial
 - Visitor Accommodations/Professional Offices

*Density only shown for Carmel Valley Master Plan; no density value indicates development limited to lots of record.
 Map Prepared by: Monterey County Resource Management Agency, December 29, 2009.
 Sources: Roads = Monterey County IT/GIS, Parcels = Monterey County Assessor, City Limits and Urban Reserve = Monterey County LAFCO.



Land use within the Coastal Zone is addressed in the Carmel & Big Sur LUPs.

Figure #LU3